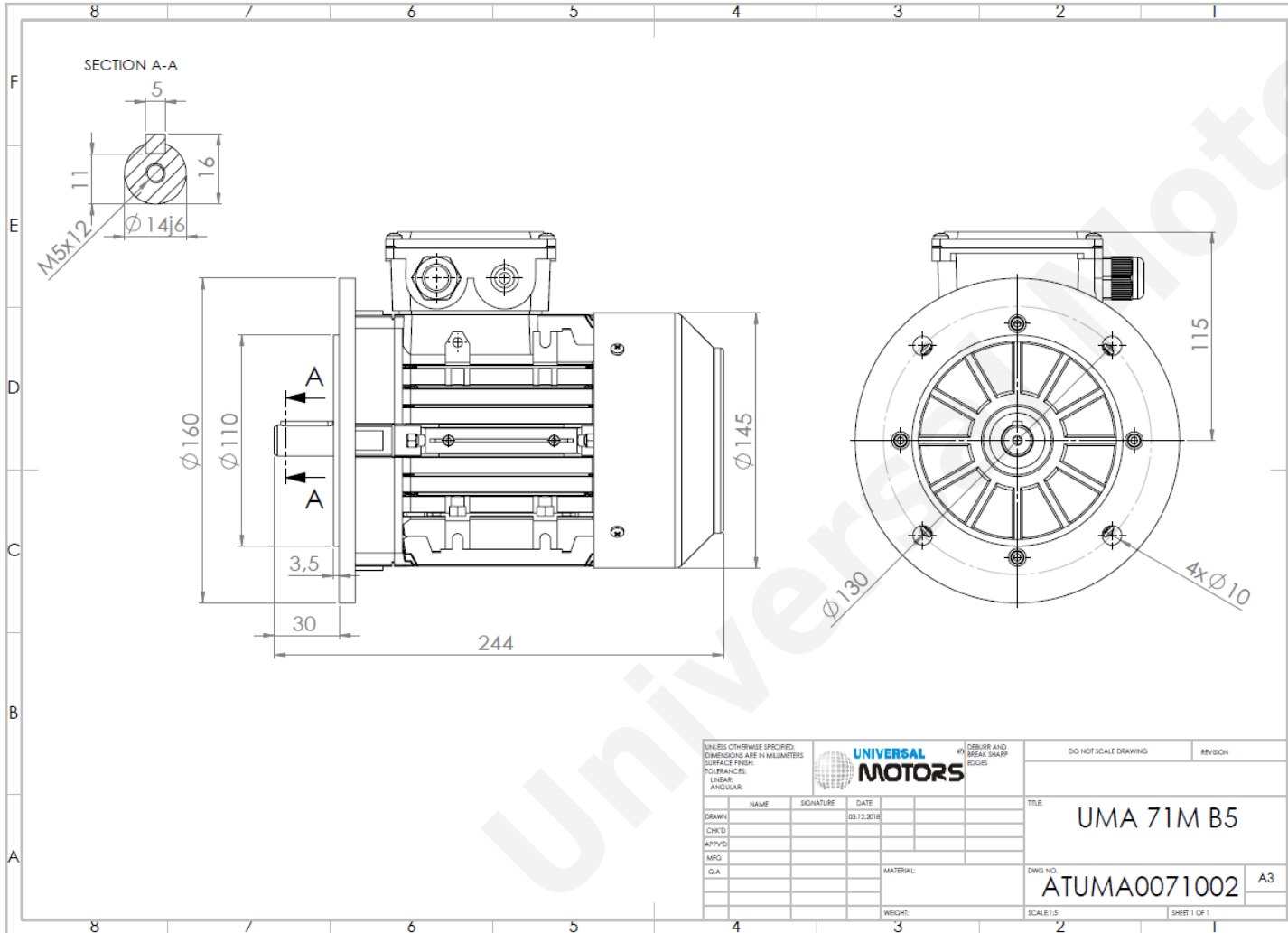




TECHNICAL DATA

Three Phase Electric Motors - Aluminum Frame
 UM2A 71M1-6
 0.18 kW / 0.25 Cv
 850 RPM



Motor type:	UM2A 71M1-6
Output:	0.18 kW / 0.25 Cv
Speed (min ⁻¹):	850 RPM
Frequency:	50 Hz
Voltage:	400 V
Current:	0.69 A
Power factor (Cos ϕ):	0.67
Poles:	6
Insulation class:	F
Temperature rise Class:	B
Efficiency 50%:	46.3 %
Efficiency 75%:	54.4 %
Efficiency 100%:	56.6 %
Torque:	1.93 N.m
Tstarting/Tnominal:	1.9
Istarting/Inominal:	3.1
Tmaximum/Tnominal:	2.2
Noise:	52 Db(A)
Weight:	5.0 Kg
Brake AC:	AC2
Torque Brake DC:	4 N.m
Bearing DE:	6202 2Z
Bearing NDE:	6202 2Z
Torque Brake AC:	10 N.m
Brake DC:	REB-05-06

Regime - S1

Altitude - 1000m

Environment Temperature - 40°C

CONTACTS:

UNIVERSAL MOTORS Tel: +351 252 299 080
 Rua de São Brás,745 Fax: +351 252 299 089
 4480-782 VILA DO CONDE Mail: geral@universalmotors.pt

* References applied only in the UK